

# Turnkey Services



*The Besser / DeVere Joint Venture is the reliable, experienced partner for your new facility located anywhere in the world.*

*We guarantee that your project will be*  
**started**  
*on time*  
**completed**  
*on time*  
**on budget!**



**BESSER / DeVere**  
Joint Venture

# Turnkey Solutions

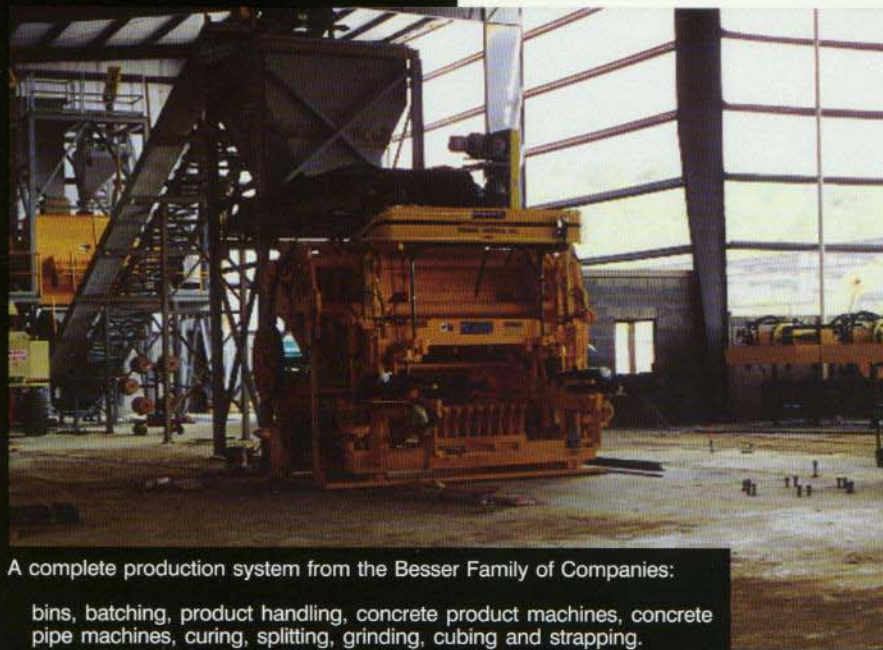
Preparing the site and acquiring permits.



Construction of the production facility.



Installing and starting-up the equipment.



A complete production system from the Besser Family of Companies:

bins, batching, product handling, concrete product machines, concrete pipe machines, curing, splitting, grinding, cubing and strapping.

The Besser / DeVere Joint Venture was created in 1998 to provide complete turnkey services for the concrete products industry. While the Besser / DeVere Joint Venture staff concentrate on preparing your new facility, your company's resources and staff remain focused on the business at hand. The primary benefit provided by the turnkey concept is that a single, experienced source is responsible for your entire project.

Turnkey services are proven to be effective in the reduction of scheduled project time and cost. Staff from the Besser / DeVere Joint Venture employ their expertise to efficiently coordinate all the details involved with projects of this magnitude, including equipment layout, building/site design, installation of equipment and start-up of operations.

Turnkey services are tailored to meet the unique requirements of each project. You can take advantage of as many or as few turnkey services as desired. Whether you elect to have Besser / DeVere handle the entire project from conception to completion, provide project management or use only selected areas of expertise, our commitment to your success is assured.

## Plant Capacity and Layout

Your sales representative will work closely with you to determine the equipment that will meet your specific production goals. Next, a plant layout will be created. Based on the plant layout a site plan will be developed and a new document, combining the two, will be prepared for your approval.

## Design Build Services

Working with the professional architectural firm of McKim & Creed, the team at Besser / DeVere develops functional, cost effective buildings to house production facilities. Knowledge of the intricacies of the processes for producing concrete masonry units and concrete pipe results in facilities that truly meet the needs of the producer.

*"Besser / DeVere turnkey services saved us a tremendous amount of time conceiving, constructing and commissioning our new Superpac facility. Having experts available made all the difference in the world."*

— Tom Long  
President  
RMC Carolina Materials  
Colfax, North Carolina USA

## Building Renovation and Retrofit

Some existing properties are "diamonds in the rough" and only require slight modifications to house a production facility. Other sites are more challenging; experienced architectural and construction professionals can provide valuable insight into the practicalities of renovation versus new construction.

Design Build Services include:

- complete set of documents for obtaining local building permits and for construction of the facility
- survey of the proposed site
- soil investigation
- civil, architectural, structural, mechanical and electrical design

## Sitework and Construction

Services range from providing the plans for complete greenfield sites to simply providing the basics. Offices, showrooms, driveways, parking lots, storage yards and aggregate handling areas are some of the many components that can be included in turnkey packages. Involvement in actual construction can be from start to finish or only for specific items. Again, you select the services which fit your needs.

## On-Site Project Manager

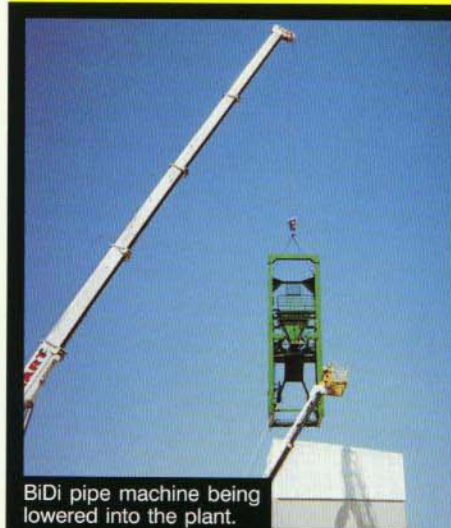
Project managers are experienced construction professionals dedicated to your success. Project managers are on-site to exercise control of the multitude of details during each critical step of the construction process. Adherence to timetables insures the commissioning of your plant is accomplished in the scheduled time frame and within budget.

## Equipment Installation

The complete concrete products production system, comprised of the equipment supplied by the Besser Family of Companies, is installed and tested according to stringent Besser / DeVere standards.

## Training

Once the complete system is installed and tested, your staff members are trained to operate, troubleshoot and maintain the production facility. Continued technical assistance is available from the Besser Family of Companies.



BiDi pipe machine being lowered into the plant.



Placing the pipe machine.



Once installed, plant staff are instructed in production techniques.

*"Besser / DeVere turnkey services meant we (Tarmac) didn't need to get involved with the daily pile of details involved with a greenfield project. I was impressed with their adherence to timetables and their overriding concern for quality. I am looking forward to working with Besser / DeVere on the next new concrete products plant Tarmac embarks upon."*

— John Hickey  
Industrial Engineer - Building Products Division  
Tarmac America, Inc.  
Richmond, Virginia USA

*"RMC Industries believes in utilizing Besser / DeVere turnkey services. This allowed our production personnel to perform their jobs without having to put energy toward construction and project management."*

*Besser / DeVere services are based on using experts in their perspective fields from block plant design through production. Our Superpac plant was operational and producing product in less time than expected."*

— Dennis Upchurch  
Senior Engineering Executive  
RMC Industries Corp.  
Decatur, Georgia USA

# Services from Conception to Completion

## Services Include:

### Conception

- Design
- Site Acquisition
- Financial Planning

### Pre-construction

- Acquisition of Architectural/Engineering Services
- Design Analysis
- Project Budgeting
- Value Engineering
- Scheduling

### Construction

- Construction Supervision
- Budget Monitoring/Control
- Quality Control
- Safety Monitoring

### Post Construction

- Project Closeout
- Occupancy Coordination
- Warranty Management
- Tracking of Equipment Deliveries
- Equipment Installation
- Plant Start-up
- Staff Training

### On-going Support

- Technical Assistance
- Blockmakers Workshops®
- Fully Stocked Parts Warehouses

Besser / DeVere takes significant steps to ensure that the right relationships are established at the beginning of every project. The combination of clear leadership, rapid communication and well defined roles creates the environment for success. One of the major strengths that our team brings to your project is our people. We select individuals with the appropriate experience, desire and commitment to work with each client. Our project team understands the necessity of flexibility in providing personnel and service to satisfy your program requirements.

**BESSER / DeVere**  
Joint Venture

Let's discuss your needs, contact us at:

**Besser / DeVere Joint Venture**  
Phone: (517) 354-4111

**Besser International Pipe Machinery**  
Phone: (712) 277-8111

**Besser Appco**  
Phone: (210) 333-1111

801 Johnson Street  
Fax: (517) 354-3120

P.O. Box 1708  
Fax: (712) 277-1222

P.O. Box 1198  
Fax: (210) 333-1508

Alpena, Michigan 49707 USA  
[www.besser.com](http://www.besser.com)

Sioux City, Iowa 51102 USA  
<http://home.aol.com/IntPipe>

San Antonio, Texas 78294 USA  
[www.besserappco.com](http://www.besserappco.com)